

This product is a bracket for installing a projector (sold separately) to a floor.

**Specifications**

Dimensions when assembled (W x H x D): 352 x 19.4 x 438 mm  
 13-27/32 x 3/4 x 17-1/4 inches  
 Weight: Approx. 1.7 kg (60 ozs)  
 Compatible projectors: PT-JX200F series

**Supplied accessory**

Floor stand (x 1)  
 Screws with captive washer (M4x8) (x 4)  
 Power cord (x1 for ET-JPF200U, x2 for ET-JPF200E)

**Note:**

- After unpacking the product, dispose of the power cord cap and packaging material thoughtfully.
- Do not use the accessory power cord for any appliance other than the specified projector.
- If any components become lost, contact the place of purchase.
- Keep small components in a safe place out of the reach of children.

**Dimensions**

Floor stand

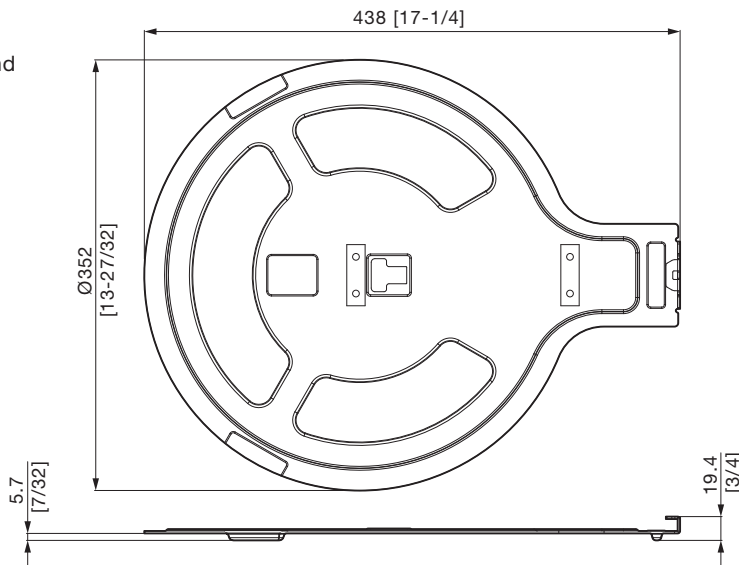
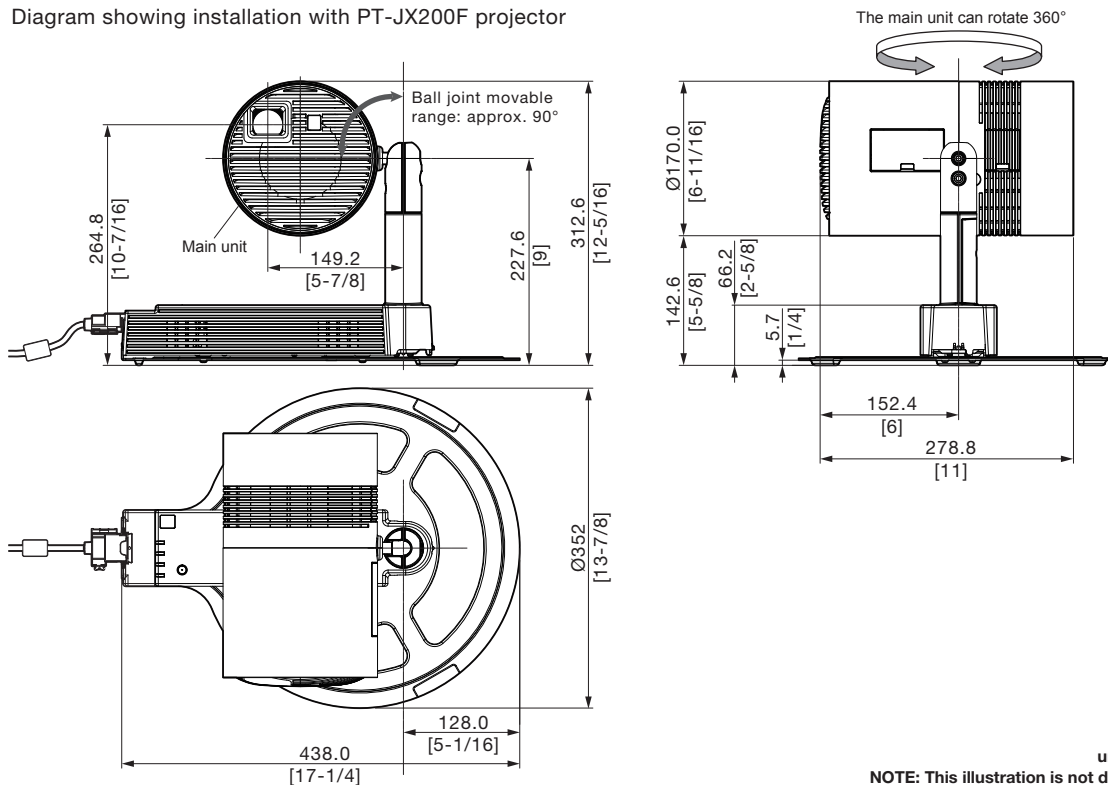


Diagram showing installation with PT-JX200F projector



unit : mm (inch)  
 NOTE: This illustration is not drawn to scale.

As of January 2017. Specifications and appearance are subject to change without notice.